



**Hobbs Meter**

Displays Engine Operating Hours



**Trim Indicator**

Displays Positon of Elevator Trim Tab



**Comm Radio 1**

Sets the frequency for the Com1 Radio



**Transponder**

Sets the squawk for the transponder



**Cylinder Head Temperature**

Displays the cylinder head temperature in Deg C/F



**Displays fill level for tank (X-Plane Version)**

Displays current tank level in percent for tank



**Display fill level for tank (FSX/P3D Version)**

Displays current tank level



**Oil Pressure**

Displays the oil pressure in bar/psi



**Oil Temperature**

Displays the oil temperature in Deg C/F



**RPM Ikarus C42**

Displays the RPM of the engine



**Digital RPM Ikarus C42**

Displays the RPM of the engine



**Airspeed Indicator with speed ranges**

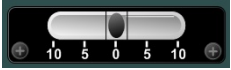
Displays airspeed in knots



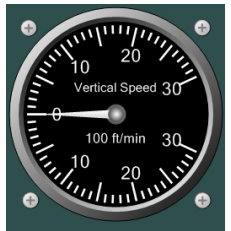
**Altimeter with Barometric Pressure adjustment**

Displays altitude in feet

**Slip Indicator**



Displays if the aircraft slips (is uncoordinated).



**Vertical Speed Indicator**

Displays the rate at which the aircraft climbs or descends in feet/minute